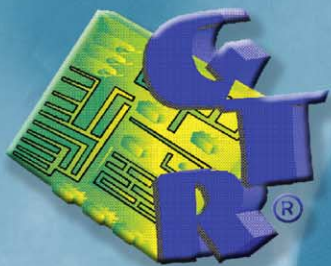


The V4W table provides exceptional versatility for a wide range of x-ray procedures. Its compact, space-saving design enables it to be mounted in small x-ray rooms as well. With extended travel for the large tabletop, full radiographic coverage with minimal patient movement is possible. The four-way floating tabletop glides on a precision bearing system while electromagnetic locks secure the patient for quick and accurate positioning. The flat tabletop permits easy patient transfer and unobstructed cross-table examinations.

## V4W Four-Way Float-Top Radiographic Table

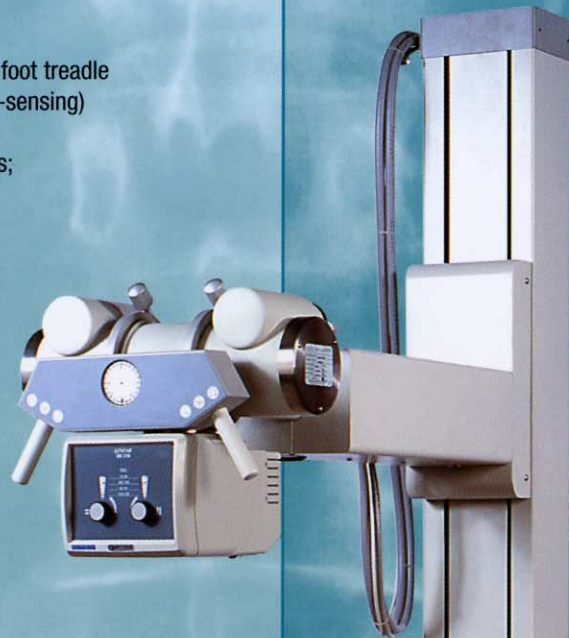


**Imaging  
for the Future**

**The V4W table provides full radiographic coverage for maximum imaging flexibility in hospitals and private practices as well.**

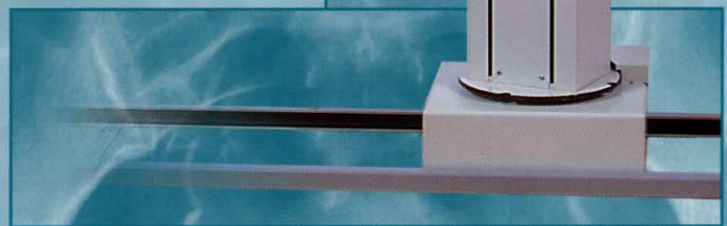
## Features:

- Heavy-duty design for busy radiographic department use in hospital environments
- Low skin-film distance for precise, low magnification film studies
- Long bucky travel for easy patient positioning
- Optional lateral cassette holder for lateral studies
- Flat tabletop ensures easy positioning for lateral studies
- Extended tabletop travel provides access for wheelchair patients
- Electromagnetic locking system is controlled by a two-step, convenient foot treadle
- A variety of high speed bucky devices (automatic, size sensing and non-sensing) and grid cabinets are available for all customer needs
- Standard 103 LPI, 10:1 grids ensure high quality radiographic exposures; other grids are optional
- Stainless side rails support a wide variety tabletop accessories (control handgrip is standard)
- Optional accessories include: lateral cassette holder, compression device, head support, hip support



## Specifications:

<b>Tabletop travel – longitudinal</b>	43" (1100 mm)
<b>Tabletop travel – cross-table</b>	+/- 4-3/4" (+/- 120 mm)
<b>Tabletop movement</b>	Four-way floating with 2-step electromagnetic locks
<b>Tabletop length</b>	88" (2200 mm); 73" (1850 mm) optional
<b>Tabletop width</b>	32" (812 mm)
<b>Table height</b>	29-1/2" (745 mm)
<b>Table base</b>	55" x 28-3/4" (1400 x 730 mm)
<b>Bucky travel</b>	22" (555 mm)
<b>Tabletop Absorption Density</b>	0.6 mm Al equivalent
<b>Power requirements</b>	24 V AC/DC



*Specifications subject to change without notice*

**GTR® Labs, Inc.**  
510 Elk St.  
Gassaway, WV 26624  
Phone: 304-364-2211  
Fax: 304-364-2212

info@gtrllc.com  
[www.gtrllc.com](http://www.gtrllc.com)

Your Dealer:

**VTSRT** rotational and cross travel tubestand, the recommended tubestand for radiographic applications