

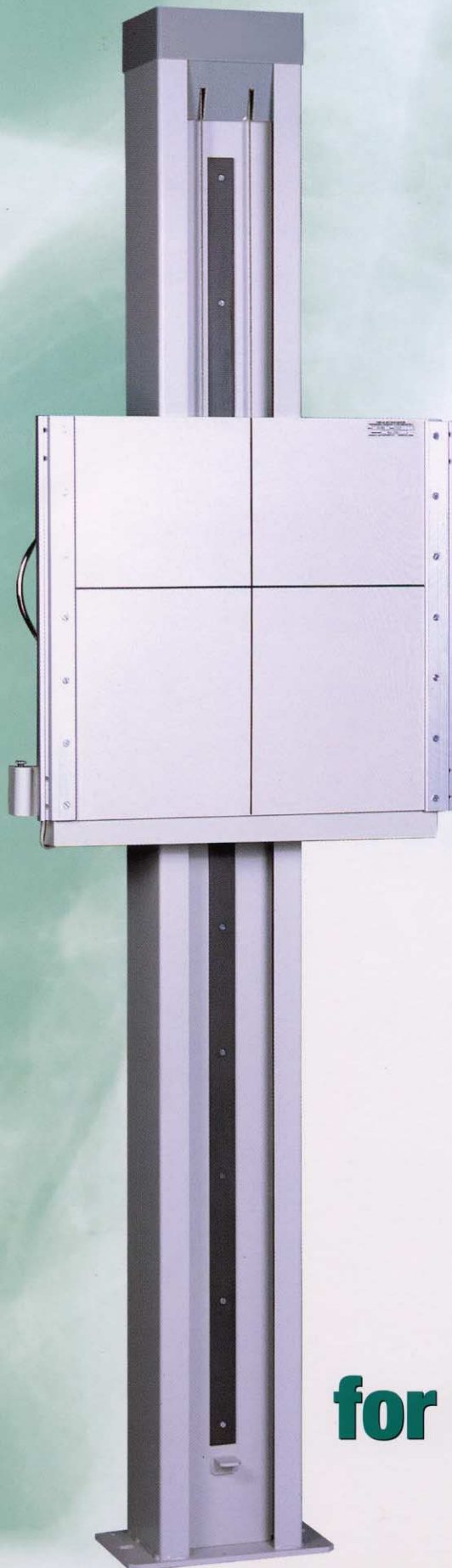
**Safety, Comfort, Simplicity,  
Performance...**

**the VWS Wall Stand,  
featured in the**

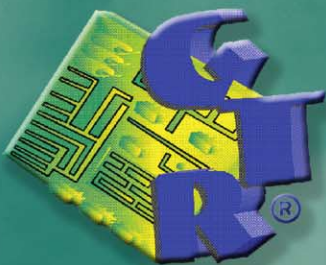
**V-RAD System available only  
from GTR<sup>®</sup>,**

**provides the highest level  
of quality, durability  
and value available today.**

# VWS Wall Stand



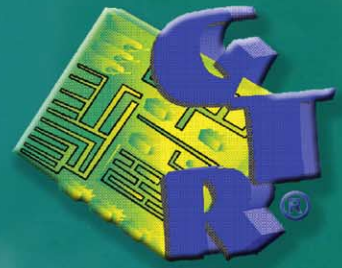
**Imaging  
for the Future**



# VWS Wall Stand

## Features:

- Electromagnetic locks coupled with the sophisticated dual rope counterbalanced system ensures maximum security and ease of operation.
- low floor positioning provides easy lower extremity exposures in connection with a low focus-floor distance tube stand, such as the VTS.
- Free-standing support bracket is optional.
- Vertical and tilting is optional.
- Optional left- or right-hand load system



## Specifications:

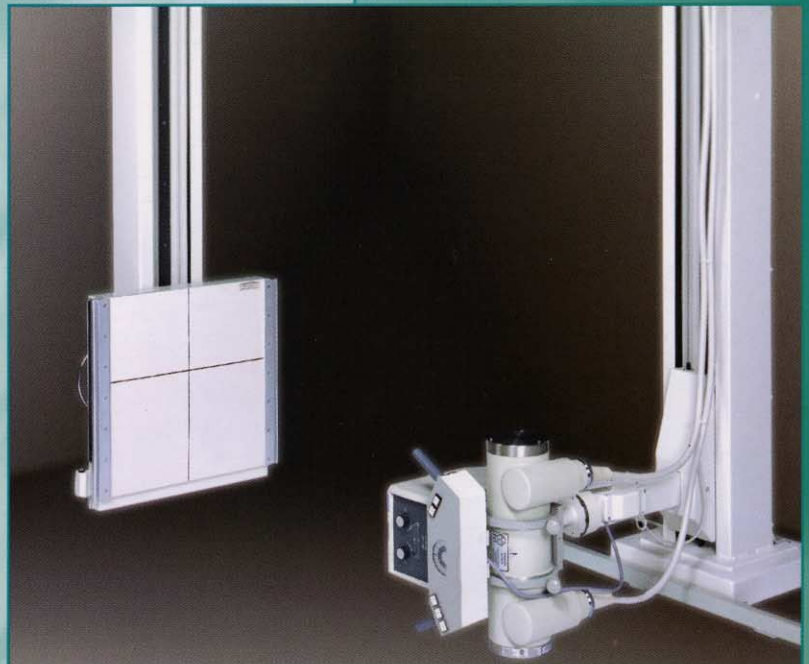
<b>Height:</b>	2270 mm (89.4")
<b>Vertical travel:</b>	1587 mm (62.5")
<b>Film distance from wall:</b>	300 mm (12")
<b>Electric power:</b>	24 V DC
<b>Bucky surface rotation:</b>	optional



Radiographic set-up



VTS Tube Stand



Lowest tube position  
(9.5" focal spot to floor distance)

*Specifications subject to change without notice*

**GTR® Labs, Inc.**  
510 Elk St.  
Gassaway, WV 26624  
Phone: 304-364-2211  
Fax: 304-364-2212

info@gtrllc.com  
www.gtrllc.com

Your Dealer: